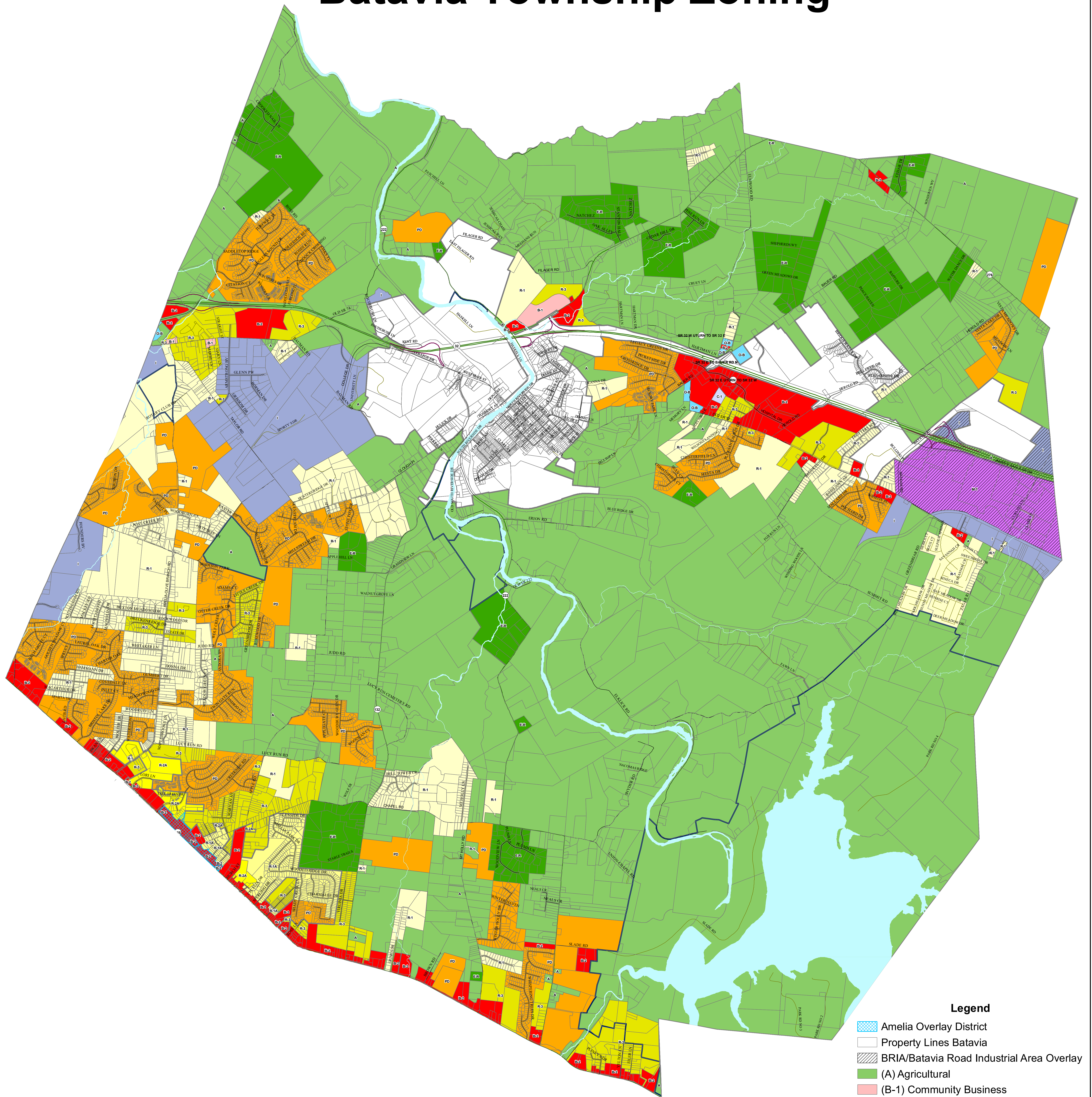


# Batavia Township Zoning



## Legend

- Amelia Overlay District
- Property Lines Batavia
- BRIA/Batavia Road Industrial Area Overlay
- (A) Agricultural
- (B-1) Community Business
- (B-2) General Business
- (C-1) Campus Industrial
- (E-R) Estate Residential
- (I) Industrial
- (M-1) Major Industrial
- (O-B) Office-Business
- (PD) Planned Development
- (R-1) Single Family
- (R-1A) Single Family
- (R-2A) Single Family
- (R-3) Residential Multi-Family

This map was prepared by the Clermont County GIS Department on January 2022  
Recent changes may not be reflected. For confirmation of a zoning classification  
call Batavia Township Zoning at (513) 732-3888.

The information contained on this map is a public resource for general information and is  
provided for use only as a graphical representation. Clermont County makes no warranty as  
to the content, accuracy, or completeness of the information contained herein and assumes  
no liability for any errors. Any reliance on this information is at the exclusive risk of  
the user.